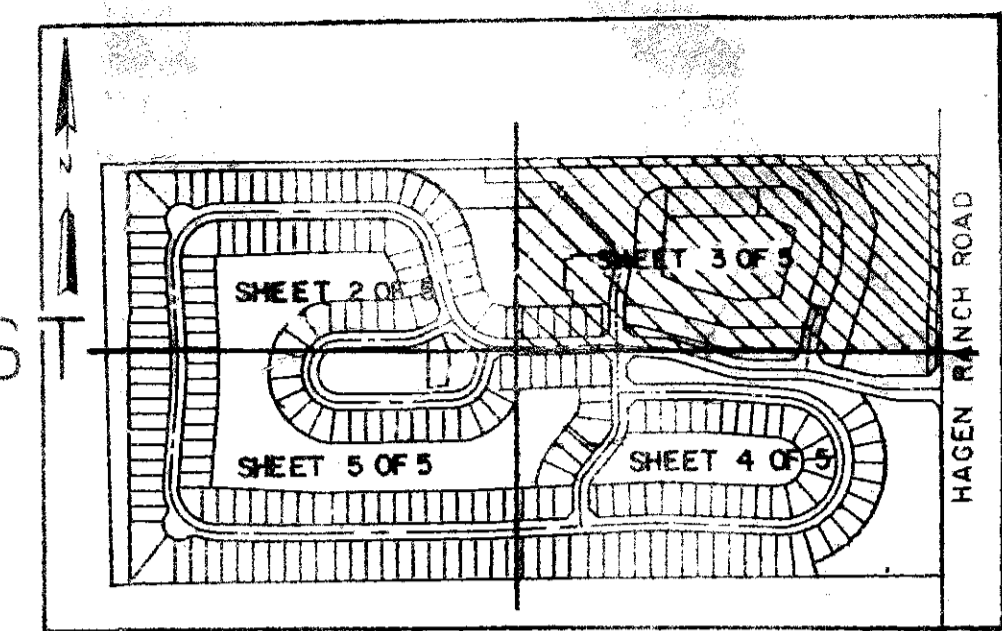
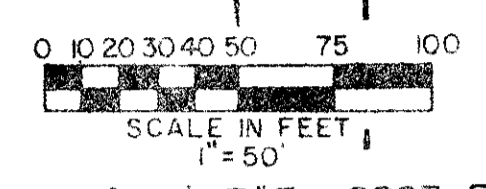
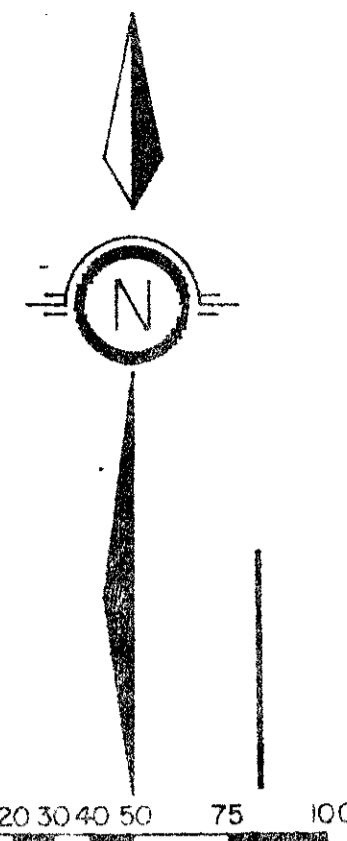


PINE RIDGE AT DELRAY BEACH

BEING A REPLAT OF A PORION OF
PALM BEACH FARMS COMPANY PLAT NO. 1
SITUATE IN SECTION 9, TOWNSHIP 46 SOUTH, RANGE 42 EAST
PALM BEACH COUNTY, FLORIDA

AUGUST, 1987 SHEET 3 OF 5

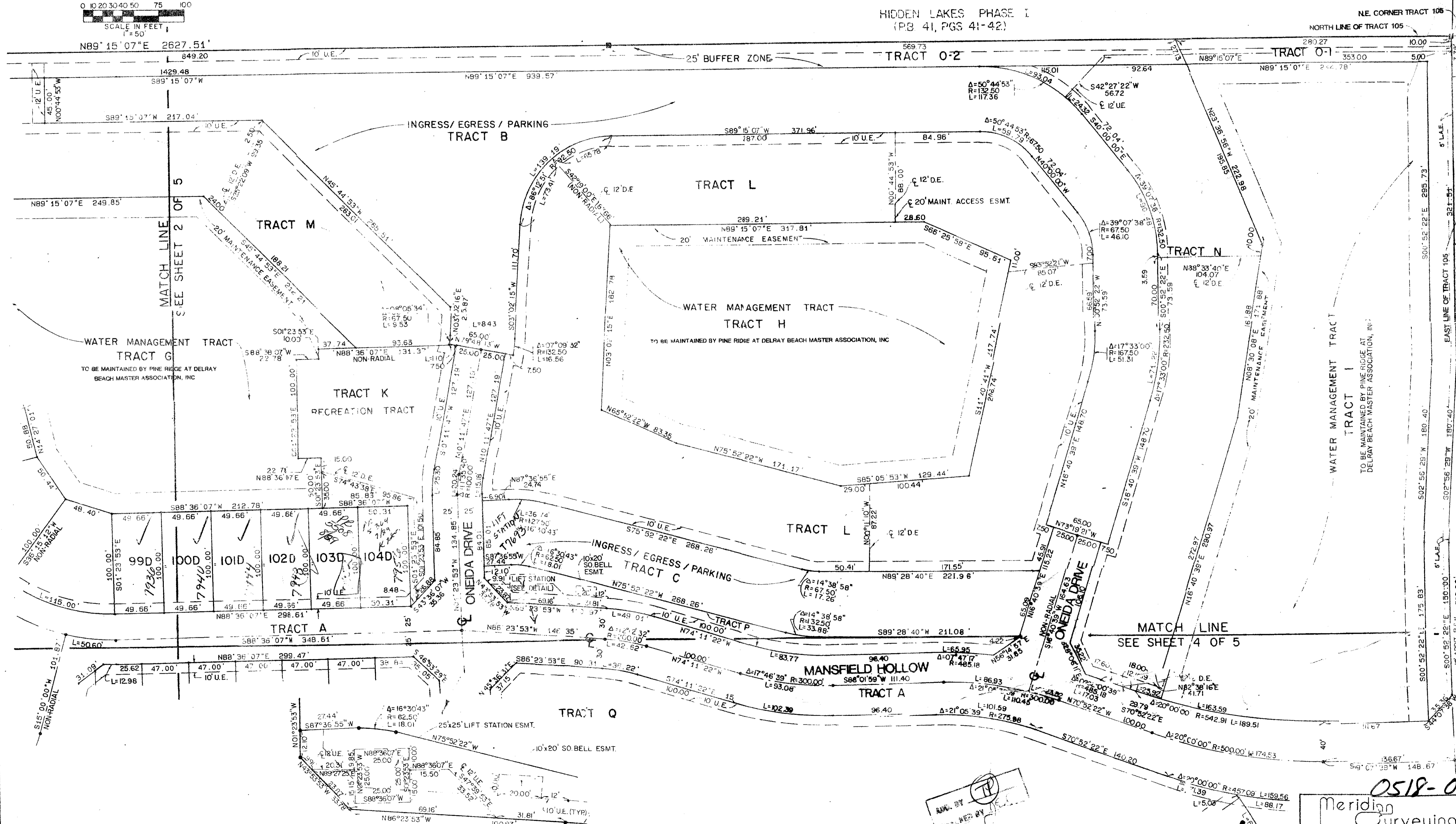


SHEET INDEX MAP

STATE OF FLORIDA
COUNTY OF PALM BEACH
THIS PLAT WAS FILED FOR
RECORD
THIS DAY OF
AUGUST, 1987 AND DULY RECORDED
IN PLAT BOOK ON PAGES
AND
JOHN B. DUNKLE, CLERK
BY: . D.C.

HIDDEN LAKES PHASE I
(PB 41, PGS 41-42)

N.E. CORNER TRACT 105
NORTH LINE OF TRACT 105



*7/14/87
Pine Ridge of Delray Beach
49
200A
B
33446
PB
PB
7-17-87*

HAGEN RANCH ROAD
(80' U.T.WATER RW)
PALM BEACH FARMS COMPANY PLAT NO. 1 (P.B. 2, PGS. 26-28)

Meridian
Surveying and mapping inc.
2000 LOMBARD STREET
WEST PALM BEACH, FL.
TURNOUT
DRAWN BY
DATE: MAY '87
CHECKED
SCALE: 1" = 50'
DRAWING NO. 09218 PL
PINE RIDGE AT
DELRAY BEACH

58/49

0518-001 Pet. 86-121

